



5010501

5110001

FOOT VALVES

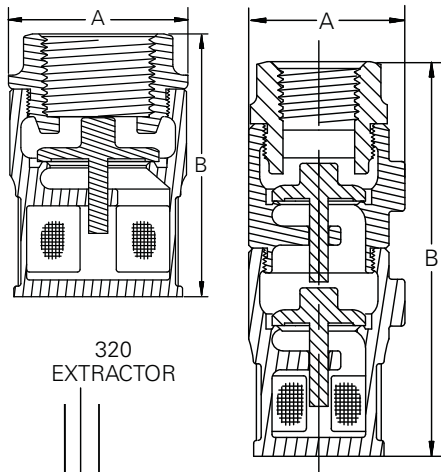
Foot valves are used to maintain the prime in suction system fuel lines. The foot valves are installed at the bottom of the suction pipe at the bottom of an underground storage tank. Single poppet foot valves are typically used where easy access to the valve is available. Double poppet models offer twice as much protection for maintaining the prime. Both 1½" models can be used with 320 foot valve extractor fittings.

HIGHLIGHTS

- Metal-to-metal poppet seating.
- 24 mesh screen protects the valve from debris.
- All valves are pressure tested to ensure accuracy.

MATERIALS

- Body: brass.
- Poppet: brass.
- Screen: 24 mesh brass.


320
EXTRACTOR

151
FOOT
VALVE

Model	Description	A		B		Weight	
		In	mm	In	mm	Lbs	Kg
5010501	½" single	1.44	37.00	2.75	70.00	0.75	0.34
5110001	½" double	1.44	37.00	4.00	102.00	1.18	0.54
7510501	¾" single	1.69	43.00	2.75	70.00	0.94	0.43
7610001	¾" double	1.69	43.00	4.00	102.00	1.31	0.60
10010501	1" single	2.00	51.00	3.00	76.00	1.12	0.51
10110001	1" double	2.00	51.00	4.25	108.00	1.56	0.71
15020201	1½" single	2.75	70.00	4.25	108.00	3.12	1.42
15120001	1½" double	2.75	70.00	5.38	137.00	4.38	1.99
20020001	2" single	3.44	87.00	4.88	124.00	4.38	1.99
20120001	2" double	3.44	87.00	6.75	172.00	6.44	2.92

